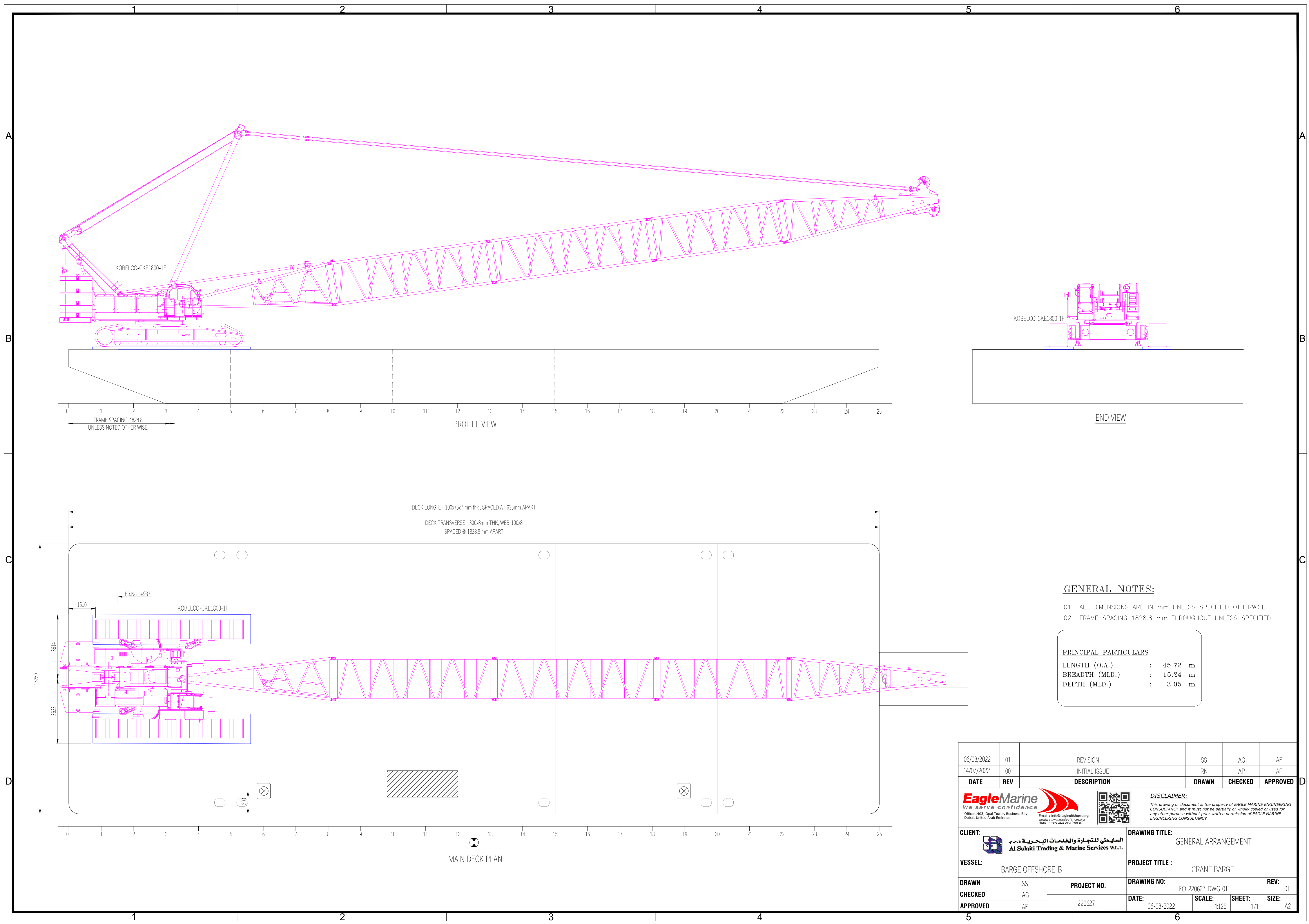


Vessel Name: **Barge Offshore B**



PRINCIPAL PARTICULAR		PRINCIPAL DIMENSIONS	
Type of Vessel	Fuel Oil Tank Barge A1	Length (LOA)	45.72 M
Builder	Marine Builders Singapore	Breadth	15.24 M
Year of Built	1977	Depth	3.05 M
Flag	Bahrain	Max. Draft	
Classification	BV	MACHINERY	
Class No.	27106Q	Crawler Crane	FMC-Link Belt LS518
Official No.	BN5042	Capacity	150 T
Call Sign	N/A	Crane Engine	Cummins
Construction	Steel	Spuds	2 Nos.
GRT	675 T		



**GENERAL NOTES:**

01. ALL DIMENSIONS ARE IN mm UNLESS SPECIFIED OTHERWISE  
 02. FRAME SPACING 1828.8 mm THROUGHOUT UNLESS SPECIFIED

**PRINCIPAL PARTICULARS**

LENGTH (O.A.)	: 45.72 m
BREADTH (MLD.)	: 15.24 m
DEPTH (MLD.)	: 3.05 m

06/08/2022	01	REVISION	SS	AG	AF
14/07/2022	00	INITIAL ISSUE	RK	AP	AF
<b>DATE</b>	<b>REV</b>	<b>DESCRIPTION</b>	<b>DRAWN</b>	<b>CHECKED</b>	<b>APPROVED</b>
<p><b>Eagle Marine</b> We serve confidence Office: 4403, Opal Tower, Business Bay Dubai, United Arab Emirates Email: info@eagleoffshore.org Website: www.eagleoffshore.org Phone: +971 2022 0943 (A&amp;H Ex:17)</p>			<p><b>DISCLAIMER:</b> This drawing or document is the property of EAGLE MARINE ENGINEERING CONSULTANCY and it must not be partially or wholly copied or used for any other purpose without prior written permission of EAGLE MARINE ENGINEERING CONSULTANCY</p>		
<p><b>CLIENT:</b>  السليطي للتجارة والخدمات البحرية ذ.م.ك. Al Sulaiti Trading &amp; Marine Services W.L.L.</p>			<p><b>DRAWING TITLE:</b> GENERAL ARRANGEMENT</p>		
<p><b>VESSEL:</b> BARGE OFFSHORE-B</p>			<p><b>PROJECT TITLE:</b> CRANE BARGE</p>		
<b>DRAWN</b>	SS	<b>PROJECT NO.</b>	<b>DRAWING NO.:</b>	<b>REV:</b>	01
<b>CHECKED</b>	AG	220627	<b>DATE:</b>	<b>SCALE:</b>	<b>SHEET:</b>
<b>APPROVED</b>	AF		06-08-2022	1:125	1/1